

THE HARMONY

Between Genuinity & Ability in the
Homoeopathic World

HRL



Therapeutic Index



Hahnemann Research Laboratory (BONDED)

H.O. :- 82 B. B. GANGULY STREET, KOLKATA -700 012 ☎ 2212 1081
Lab. :- DN-30, SECTOR-V, SALT LAKE CITY, KOLKATA - 91 ☎ 2367 2586

E-mail:- hrl_kol@yahoo.com



2



Research Towards The Development of Medicine

Founder: Late Dr. Sudhir Chandra Deb
MCPS, HMB, Ex-DMO.

Our Bonded Laboratory is under the expert supervision and modern scientific management of the following personnel

Prof. Dr. Ramkrishna Ghosh Mondal (Executive Member of Central Council of Homoeopathy, Gov. Of India)
Ex-Principal of Mahesh Bhattacharya Homoeopathic Medical College & Hospital. (Chief Pharmaceutical Adviser)

Dr. Bikash Narayan Sinha (Asst. Pharmaceutical Adviser)

Mr. Asok Sardar (Chief Botanist)

Mr. Atindra Nath Chakroborty (Chief Chemist)

Mr. Mridul Kumar Samanta. (Chief Mfg. Chemist)

Dr. Prasun Dutta MBBS (Cal), M.R.C.P (London)
(Pharmacologist)

Mrs. Shampa Deb (Proprietress)

Dr. Ujjal Chandra Deb (Chief Adviser)

Mr. Tapan Kumar Rakshit (Advocate) Legal Adviser
Kolkata High Court.

3



HAHNEMANN RESEARCH LABORATORY

FOREWORD

Dear Dr./Dealer/Patrons,

In favour of our firm M/s. Hahnemann Research Laboratory, I have proudly announced that we are as an well known firm in India that is proved that we have got Bonded Laboratory granted by Commissioner of Excise, Govt. of Wet Bengal. It is an excellent step of our Laboratory. Our most Novel Products is my own formulation **Jaborandi Hair Tonic**, which is highly recommended by you, and **Boroplex Antiseptic Cream**, **Boroplex Prickly Heat Powder** and our latest research product **Rheumplex Tablet** have been marketed all over India.

My earnest request to all of you for visit our Laboratory if opportunity comes for details discussion to create good relation with us. Our new price list catalogue now published for gathering knowledge about our products.

Our Motto is to Serve the Society with pure.

Genuine and effective medicine, we always cooperative with our customers with our heartiest dealing, prompt delivery with Strict supervision by our expert personnel is our quality.

Thanking You,

Yours Sincerely
Mrs. Shampa Deb
(Proprietress)

4

Quality Control



HRL's commitment No Compromise with Quality and the meticulous effort put in during planning stage are well reflected in their application regarding control of process of products.

Our quality division is equipped with sophisticated - instruments for testing the authenticity of raw materials and other inputs, for process control and for product control i.e. assurance of quality of the finished products as per standards given in H.P.I. and G.M.P.



Some of the instruments used are U.V.-visible Spectro Photometer, Thin Layer cromotography (TLC), Polerimeter, Moisture Balance, Refractometer and others.

5



HRL maintains quality standards in preparation of Mother Tinctures by following SOP (Standard operating procedures) at every stage of processing.



Thin Layer Chromatography (TLC) system, it plays a major role in analysis of Mother Tincture. The moisture in herbs is determined by Electronic Infrared Moisture Analyzer and graded as per H.P.I. standards to give the right balance between moisture and menstrum

The graded herbs are macerated for at least thee week in Extra Neutral Alcohol and Dematerialized water in Stainless Steel containers.

The macerated residue is pressed by heavy Hydraulic Presses made of High Grade Stainless steel. Maceration in stainless steel containers to avoid contamination.



6



Heavy stainless steel hydraulic especially designed with different gadget system for maintaining exact pressure control for optimum extraction of the macerated residue.

The ensure maximum extraction, the application of pressure is varied from herb, an exclusive practice of HRL.

Equipments like bottles, tubes, micropipettes are first cleaned with dematerialized water and the dried in oven for one hour 150 degree before use.

Prepared under strict quality control measures, our mother tincture are the most effecti available in the market.



7



Alfalfa TONIC

MIXTURE WITH IRON & CALCIUM PHOSPHATE

AN IDEAL HEALTH TONIC FOR FAMILY

COMPISITION :- Alfalfa , Avena sat , Aswagandha , China , Hydrastis Can , Acid Formic , Passiflora , Calc Phos , Mag phos , Ferrum Phos , Nat. Phos , Kali Phos , Alcohol , Syrup & Aromatics .

Indication:- It acts for general weakness , anaemia, Sleeplessness , fatigue , Poor Nutrition , Poor Appetite , Indigestion , Loss Of weight and memory , convalescence and depleted condition after child birth .

Dosage:- Adult : 2 teaspoonfull and children 1 teaspoonfull with water twice daily before meals , or as directed by the physician .



हेतु :

खुन की कमी, भुख की कमी, बदहजमी, अनिद्रा, स्मरणशक्ति को कमजोरी, वजन की कमी, सुस्ती, प्रसव पश्चात कमजोरी दूर करने तथा अश-रोग से बिगड़े स्वास्थ्य के पुनः निर्माण-हेतु अति उत्तम टॉनिक ।

Packing:-

115ml, 200 ml, 450ml.

8



Super Alfalfa With Avena

(Strongest Stimulative iron with vitamins tonics)

Composition :- Alfakfa , Avena sat , Aswagandha , China , Hydrastis Can , Acid phos , Passiflora , Damiana , Crategus Ox , Calc Phos , Mag phos , Ferrum Phos , Nat. Phos , Kali Phos , Vitamins , Alcohol , Syrup & Aromatics .

Indications :- The components of this preparation not only stimulate the general physical and mental efficiency but also support the regenerative processes during and after diseases of an organ as well as all stages of exhaustion . An ideal tonic for anaemia , Sleeplessness , fatigue , Poor Nutrition , Poor Appetite , Indigestion , Loss Of weight and memory , convalescence and depleted condition after child birth .

Dosage :- Adult : 2 teaspoonful and children 1/2 teaspoonful with water twice daily before meals , or as directed by the physician .



हेतु :

खुन की कमी, भुख की कमी, बदहजमी, अनिद्रा, स्मरणशक्ति की कमजोरी, वजन की कमी सुस्ती, प्रसव पश्चात कमजोरी को दूर करने तथा इस रोग से बिगड़े स्वास्थ्य के पुनः निर्माण हेतु अति उत्तम टॉनिक है।

Packing:-

200 ml, 500ml.

9



ANAEMIAPLEX TONIC

EXCELLENT ANAEMIA CORRECTIVE TONIC.

Composition :- Magn , Boro , Zinc Sulf , Cobalt . nit , Cuprum Acet , Magn .Acet . Acid formic , Acid Tartarie , Syrup & Aromatics, Alcohol .

Indications :- Well tasting restorative recommended in convalescence , lack of appetite , anaemia , conditions of fatigue

Dosage:- Adult : 1 teaspoonful



Packing:-

115ml .

10



Arnica Hair Tonic

For growth & health of hair External use only

Composition:- Arnica mont, Jaborandi, Cantharis, Cinchona off, Pilocarpin, Olium Santalum, embalica R , till & Olive Oil.

Indications :- Food and tonic for hair , an excellent homoeopathic Medicated hair oil , prevent falling of hair , and regular Use tends to stimulate the secretions of the hair follicles and renews the growth of hair , remedy for dry scalp and keep the brain cool. It is also strongly recommended for use of sleeplessness and mental anxieties .

Dosage :-

To be applied on scalp & hair twice daily or as directed by the physician.

Packing :-

115ml . 450ml .

11



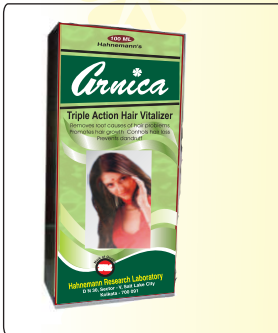


Arnica

Triple Action Hair Vitalizer

Composition :- Arnica Mont, Aloe Socotrina, Embelica Off, Terminalia Cheb, Nicotinum, Nyctanthes Arb, Resorcinum, Jaborandi, Thea Chinensis, Glycerin, Excipients & Alcohol.

Indications :- Food and tonic for hair, an excellent homoeopathic Medicated hair oil, prevent falling of hair, and regular Use tends to stimulate the secretions of the hair follicles and renews the growth of hair, remedy for dry scalp and keep the brain cool. It is also strongly recommended for use of sleeplessness and mental anxieties. Control premature greying and dandruff.



Dosage:-

To be applied on scalp & hair twice daily or as directed by the physician.

Packing:-

100ml .

12



ASOKA / ASOKA forte

TONIC (SPECIAL)

A Wonderful Uterine Tonic .

Composition:- Jonosia asoka, Viburnum pr, Pulsatilla nig, Abroma aug, Arjuna, Secale Cor, Alestris F, Kali Brom, Calc Phos, Alcohol, Syrup & Aromatics .

Indications :- It is used for irregular menses, painful excess discharges with headache, uterine Complains, heart troubles, Loss of appetite, constription, leucorrhoea, sleeplessness, etc.

Dosage :- Two teaspoonful and with water twice daily after meals, or as directed by the physician .

हेतु :

अनियमित तथा अतिरिक्त मासिक घर्म सख्द, स्वेत प्रदर, रक्त प्रदर, यकृत के सभी रोग, खून की कमी, अनिद्रा, भुख न लगना इत्यादि रोगों के लिये उत्तम दवा है ।

Packing :-

115ml. 200ml. 450ml

13

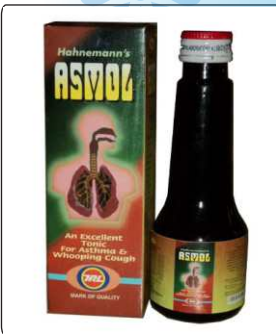


ASMOZ

AN EXCELLENT TONIC FOR ASTHMA & WHOOPING COUGH

Composition :- Ephendra vulgaris, Ipecacuanha, Nux vomica, Justasia Ad, Stramonium, yebra sant, Belladonna, Oleum Santhali, Lobelia infalta, Kali iodatum, Caffeinum Cit, Syrup, Caramel & Aromatics, Alcohol Content .

Indications :- Coryza, Breathlessness, or Dyspnoea Constriction in the Chest, Dry mucus membrane, Wheezing, Spasmodic Affections, Whooping Cough, Bronchitis (acute & chronic) Tight dry choking cough, in different sorts of respiratory tract infections it gives quick relief of attack. A Brochodialatory and expectorant .



Dosage:-

One or two teaspoonful 2-3 times daily, as directed by the physician .

Packing:-

115ml. & 450ml .

14



AVENA Tonic

For Nervous Disorder Pulls up nervous System

Composition :- Avena, Aswagandha, China off, Damiana, Lycopodium Clav, Calc phos, Ferrum phos, Kali phos, Syrup & Aoromatics, Alcohol .

Indications :- An idol tonic for nervous disorder, pulls up nervous system and also a corrective for sexual weakness, Lack of memory, concentration of mind, Insomnia, Anaemia, Nerusthenia, loss of appetite, prostration And weakness due to over strain .

Dosage :- Two teaspoonful three times daily, or as directed by the physician.

निर्देशिका : यह स्नायु दुर्बलता एवं इन्द्रिय दुर्बलता में व्यवहार होता है । उपरोक्त कारण से सिर चकराना, कलेजा घडकना, लिंग शिथिल होना, हाथ-पैर में कमजोरी मालूम होना, स्मरण शक्ति का घटना, खून की कमी, अनिद्रा, भय एवं मानसिक अवसाद आदि बिमारियों में व्यवहार होता है ।

Packing:-

115ml. 450ml .

15





Babycomplex

An excellent And effective
Tonic for children
For growth & development

Composition :- Chamomilla , Andrographis p , cina,
chelidonium , carica p , Aethuja cyna , ipecac , Silicea ,
Kali phos, Calc phos, Mag Phos ,Nat Phos , Glucose ,
Syrup, Caramel & Aromatics ,& Alcohol

Indications :- A most effective tonic of Vital deficiencies
for baby , it may be used specially in building body
construction .it increase appetite , remedy of rickets ,
marasmus greending of teeth , flatulence , stomach pain ,
liver trouble,Osteomalacia and other vitamin deficiencies .



Dosage

Babies : 10 to 15 drops
twice daily,
Children : Above 3 years
1 teaspoon full twice daily
after food or as directed
by the physician .

Packing:-

115ml. & 60ml

16



BABYPHOS WITH MALT

CHILDREN TONIC

For Healthy Baby

Composition :- Chamomilla , Podophyllum , Peltanum,
China off , Calcarea Phos , Calcarea Carbonica Syrup,
Caramel & Aromatics , Alcohol

Indications :- Useful as a general tonic for Dentition
Diarrhoea & Vomiting of milk due to Calcium & Vitamin
deficiencies Weak constitution & emaciation , enlargement
of livers & marasmus .

Dosage

One teaspoonful 3 times
daily with water or milk,
or as directed by
the physician .

Packing:-

150 Gms

17



Brainoplex

A Memory Accelerating tonic

Composition :- Brahmi , Anardium Ori , With Som ,
Aralia R , Syrup, & Aromatics , Alcohol

Indications :- Prescribed for increasing memory, depression ,
weak digestion. It is an homoeopathic tonic
and can be safely used by all.

Dosage :- **Adults :** 2 teaspoonful 3 times daily after
meals with water, or as directed by the physician .

Children : 1 teaspoonful 3 times daily after meals with water,
or as directed by the physician.



लक्षण :

यह स्मृतिबद्धन के लिए, हजम के कमजोरी में
व्यवहार किया जा सकता है। इस होम्योपैथिक
टानिक किसी भी कमजोरी में निर्विधा व्यवहार
किया जा सकता है।

Packing:-

115ml.

18



Boroplex

DUSTING POWDER

AN EXCELLENT ANTI SEPTIC
SURGICAL DRESSING

Composition :- Boric Acid , Hydrastis can , calendula off ,
Thymol , Calc sulph, Nat Sulph, Calcium ,
Carbonate Base

Indications :- A wonder full Antiseptic surgical dressing
for wounds .cuts, bruises and minor injuries .it is very
effective in the treatment of old sore and ulcer which are
very slow to heat .Boroplex actively prevents Prickly heat
and protects the skin from sores dhoibetic and athet's foot.
It may be used even new born Child .

Dosage

To be dusted on the effected
part only or as directed by
the physician .

Packing:-

100gms.

19





Boroplex™

PRICKLY HEAT POWDER

For External Use Only

Composition :- Boric Acid , Hydrastis can , calendula off , Thymol , Calc sulph , Nat Sulph , Talc to make, Alcohol, Calcium , Carbonate Base

Indications :- An Antiseptic surgical dressing for wounds . Cuts prevents Prickly heat and protects the skin from sores of infection .



Dosage

To be dusted on the affected part only or as directed by the physician .

Packing:-

150gms.

20



Boroplex™

ANTISEPTIC CREAM

For External Use Only

Composition :- Boric Acid , Hydrastis can , calendula off , Lanolin & paraffin , Thymol, Alcohol .

Indications :- It is used for protective torn and jagged wounds , suppuration for burns and soothing emollient for chapped skin, Cracked nipples , Cut and dry skin diseases, its floral fragrance persist all day long.

Dosage

To be applied by rubbing gently of effected part only or as directed by the physician .

Packing:-

21gms.

21



PYROPLEX

Tooth Powder

Composition :- Hecla Lava, Ferrum Phos, Mag. Carb, Calc. Carb, Atista Ind., Menthol, Thymalum, Camphor, Kreosotum, Cinnamomt, Azadireta Ind, Execipoent.

Indications :- It is an effective tooth powder for any type of dental problem, Mainly Pyorrhoea.



Dosage

To be used thrice a day after meal or as directed by the physician.

Packing:-

100 Gms.

22



BABY OLIVE

Baby massage Oil

Composition :- Azadirecta Ind, Oleum Sant , Berbaris Vul , Terminalia , Arjuna , oleum Animale , Oleum Jac Acel , Olive oil, Archis oil, & Aromatics ,

Indications :- A non sticky massage oil which is used for development of healthy skin and muscles in growing children . It supplies vitamin A & D in sufficient quantity to a growing child . as a massage oil it reduces muscles pain and help development of muscles and body whenever worn out of along continued disceseage it can be used for all of us specially effective for mothers in the lying in period. Smell of the massage oil will last throughout the day.

Dosage

Massage oil should be used twice a day atleast half to one hour before taking a bath or as directed by the physician.

Packing:-

120ml.

23





Calcitoplex

CALCIUM TONIC

*For
BABIES*

Composition :- Calc phos , Calc Flour , ferrum phos , Silicea ,
Lacithin , Mag Phos , Kali Phos , Sugar Of
Milk , and glucose base Q.S.

Indications :- It is an effective tonic food for babies and
children for the treatment of all weakness caused by lack of
calcium & iron , its stimulates growth of bones &
tissues of children .

Dosage

Babies : 1/2 teaspoonful
infants & School Babies.
Children : 1teaspoonful 3
to 4 times daily with luk
warm water add sugar if
necessary, or as directed by
the physician .

Packing:-
100gms.



24



Cardioplex

HEART TONIC

An Effective HEART Tonic

Composition :- Crataegus , Aurrum Mur , Convellaria M ,
Ignatia , Arnica , Aqua Dist Water , Syrup Atomic , Alcohol .

Indications :- A genuine tonic for arrhythmic heart with
hypertension or irregular cardiac beats .

Dosage

10 drops 2-3 times a day
or as directed by
the physician .

Packing:-

15ml.



25



DAMOPLEX

Invogourating SEXUAL Tonic

Composition :- Damiana ,Ginseng , Agnus Cast ,
Nuphur Lut ,Conium Mac , Ignatia ,
Lycopodium Aqua Dist Water ,
Syrup Aromatics .

Indications :- Luck of Sexual power in male & Female,
Neurasthima, Nervous , Exhaustion , all
types of condition involving sexual weakness
& also prolonging duration of intercourse .

Dosage

10 drops to be taken 3-4
times a day .The dose may
be increased depending on
the amount of weakness in
the individual or as directed
by the physician .

Packing:-

115ml ,450 ml.



26



Diboplex

*FOR CONTROLLING
BLOOD SUGAR*

Composition :-

Syzygium , Ferrum Ars , Acid phos , Sugar of Milk.

Indications :- An effective medicine for controlling blood
sugar in cases of diabetes mellitus and also
helpful in case of diabetes insipidus ..

Dosage

2 tablets 2-3 times a day
depending on the level of
sugar in blood or as directed
by the physician .

Packing:-

20gms.



27



Earplex

Ear drop

For external Use Only

Composition :- Mullein oil , Calendula , Chamomilla , Resorcin , Boric acid , Aqua Distilled , Glycerine , Alcohol

Indications :- It is most effective analgesic antiseptic ear drops with benefit in various ear troubles Otagin with sence of obstruction , deafness, dry scally condition of meals. Eustachain tube ,external auditory canal , Typhanic membrance , inflamed mastoiditis, Otitis ineternal and media..



Dosage

The ear cavity should be first cleansed with boric cotton wool and then two to three drops Earplex to be poured. in this way twice or thrice should be used daily or as directed by the physician .

Packing:-
15ml.

28



Femaplex



*Specially formulated
For UTERINE Troubles*

Composition :- Asoka , Vibernum Pr , Pulsatilla , Abroma Aug , Abroma radix , Arjuna , Secale Cor , Alestris F , Helonius D, Valerina , Caulophyllum, China , Berbaris vul , Kali Brom , Syrup, Aromatics ,& Alcohol

Indications :- It acts for all sorts of uterine troubles as irregular , executive or scanty or pain full menstruation , stoppage of menstruation , Leucorrhoea , loss of Appetite , Headache etc.

Dosage

Two teaspoonful with water twice daily after meals . or as directed by the physician,

Packing:-

200ml.

29



Fevrin

Syrup

An excellent remedy for FEVER

Composition :- Aconite Nap , Azadricta ind , Bryonia alb , Baptisia T , Belladonna , China off , Eupatorium Perf , Gelsimium S , Rhus Tox , Syrup, Caramel & Aromatics ,& Alcohol.

Indications :- Highly a dependable yet effective preparation for feeling feverish high or low . inflammation ,even effective in Pleurishy associated with disturbing cough & pneumonia , can be suitable in treating or in mild fever on certain change of weather , efficacious in treating for influenza typhoid symptomic relief or pains & septic lever and all other temperature raised in febrile diseases .



Dosage

Adults : Adults 2 teaspoonful thrice daily.

Children : 1/2 to 1 teaspoonful thrice daily. or as directed by the physician,

Packing:-
60ml, 450ml,

30



GASTROPLEX



*An excellent And effective
remedy for Gastric Pain*

Composition :- Bismuth Carb , Carica Papaya , Belladonna , Nux Vomica , Alumina , Mag Mur , Mag Phos, Syrup, Aromatics

Indications :- It is an antacid creamy carminative mixture for stomach discomfort due to poor digestion, atonic dyspensia , acute or choronic Gastritis, Gastric Ulcers , Gastro-duodinal Catarrah , Heartburns burning urine, obstinate constription with sinking feeling in the stomach with dull headache, haemrraoides , spasmodic pain in the epigastrium, hyper acidity , spasm of stomach , vomiting tendency, pain in the stomach an hour after or before taking something .pain relief after food , Rumbling , Pinching , Gripping pain

Dosage

One to Two teaspoonful 2-3 times daily. or as directed by the physician,

Packing:-

115ml, 200ml, 450ml.

31





Gripoplex

GRIPE MIXTURE

*An effective remedy for
BABIES & CHILDREN*

Composition :- Chamomilla , Podophyllum , China, , Colocynth , Carica p , Oil Anethi, Kali Mur, Calc phos ,Nat Phos , Nat Carb, Syrup, Aqua dist,& Alcohol

Indications :- It is actually used for babies at the teeth growing stage . it is also remedy for and applied for gripping cutting pain , hepatic colic and formic gas

Dosage

New born infants : 1/2 teaspoonful 1to 6 months : 1 teaspoonful. 6 Months to 1 years and above : 2-3 teaspoonful or as directed by the physician,

Packing:-

150ml.



32



HAHNE BALM

STRONG PAIN RELIEVER

For External Use only

Composition :- Camphor, Mentha P, calendula off, Arnica M , Rhus tox , Gaultheria P , Nat Salicylicum , Oilof Turpentine , Lanolin & Parafin , Alcohol .

Indications :- It helps to reduce headache also pain in bones and muscles following injury , stiff neck , crick in back and low Tack pain , neuralgia of knee pains in joints generally and in bones , weary when going up stairs

Dosage

To be apply by rubbing on effected part only or as directed by the physician.

Packing:-

20 gms



33



HAHNE OLIVE

IN GENERAL MASSAGE OIL

Composition :- Azadirecta Ind, Oleum Sant , Berbaris Vul , Terminalia , Arjuna , oleum Animale , Oleum Jac Acel , Olive oil,Archis oil, Aromatics ,

Indications :- A non sticky massage oil which is used for developoment of healthy skin and muscles in general. It supplies vitamin A & D in sufficient quantity for soft skin . as a massage oil it reduces muscles pain and help development of muscles and body whenever worn out of along continued discases it can be used for all ages specially effective for mothers in the lying in period. Smell of the massage oil will last throughout the day.

Dosage

Massage oil should be used twice a day at least half to one hour before taking a bath or as directed by the physician.

Packing:-

120ml.



34



HAHNEPLEX

A Wonderful Digestive Tonic

Composition :- Carica Papaya , Alfalfa Pepsinum , Nux Vomica , Pulsatilla , Hydrastis Can , Nat Phos , Mag Phos, Syrup, Aromatics , & Alcohol .

Indications :- A Powerful digestive tonic for indigestion. It acts on digestive system of body , it increases digestive activity in stomach , and relief from indigestion, heart burns, dyspepsia ,poor or loss of appetite , contripation , dysentery , convalescence after chronic and acute illness, stomach disorders , acidity, flatulence .

Dosage

Two teaspoonful twice daily after meals, or as directed by the physician,

Packing:-

115ml, 200ml, 450ml.



35



heltoplex

WITH
Ginseng
For
HEALTH & ENERGY

**A POWERFUL TONIC
FOR HEALTH & ENERGY**

Composition :- Alfalfa , Avena sat , Crataegus , Damiana , Hydrastis Can , Ginseng , Passiflora In , Calc Phos , Kali Phos , Alcohol , Syrup & Aromatics .

Indications :- A fast & more Powerful effective tonic for Health & energy , It acts for General weakness , fatigue , Poor Nutrition , poor appetite , indigestions , sleeplessness, anaemia , Weakness of memory , central nervous system , anxiety and cardiac palpitation .



Dosage

Children : 1 teaspoonfull twice daily after meals .
Adult : 2 teaspoonfull twice daily after meals , or as directed by the physician .

Packing:-

200 ml, 450ml.

36



heltoplex

MALT
An Energetic Tonic

**A POWERFUL TONIC
FOR HEALTH & ENERGY**

Composition :- Alfalfa , Avena sat , Crataegus , Damiana , Hydrastis Can , Ginseng , Passiflora In , Calc Phos , Kali Phos , Alcohol , Syrup & Aromatics .

Indications :- A fast & more Powerful effective tonic for Health & energy , It acts for General weakness , fatigue , Poor Nutrition , poor appetite , indigestions , sleeplessness, anaemia , Weakness of memory , central nervous system , anxiety and cardiac palpitation .



Dosage

Children : 1 teaspoonfull twice daily after meals .
Adult : 2 teaspoonfull twice daily after meals , or as directed by the physician .

Packing:-

250 Gms, 450 Gms.

37



HOMOTOPLEX

*An excellent tonic for
BLOOD PURIFIER*

Composition :- Azadiracta Ind , Articum lappa , Swertia , Chirata , Echinacea Ang , Calotropis G , Sulphur , Purified- Water , Syrup,Caramel & Aromatics , Alcohol .

Indications :- Any skin diseases appear mainly owing to your impurities of blood . So purity of blood are the only an swer To your skin diseases . Take immediate step and adequate action to purify your blood by using of HRL's HOMOTOPLEX .



Dosage

Two teaspoonful Twice daily.
Or as directed by the physician,

Packing:-

115ml,

38

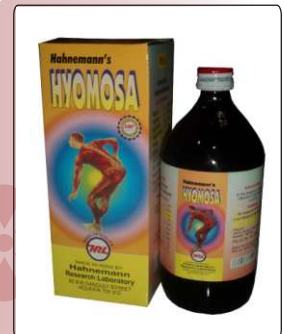


HYOMOSA

*An excellent tonic for
Rheumatic Pain & Muscles Or Joints*

Composition :- Belladonna , Nux Vomica , Baptisia , Eupatorium Perf , Phytolacc D , Colchicum , Cimicifuga R , Rhus tox , Purified Water , Syrup,Caramel & Aromatics , Alcohol .

Indications :- In the treatment of pain ful affection of the muscles or joints .



Dosage

Two teaspoonful Thrice daily.
Or as directed by the physician,

Packing:-

115ml, 450ml.

39



Jaborandi

HAIR TONIC

*For growth & health of hair
External use only*

Composition :- Jaborandi , Arnica mont , , Pilocarpin ,
Cantharis , Cinchona off , Olium Santalum ,
Amloki ,

Indications :- It is, an excellent tonic for hair , it cools -
Brain and helps to growth hair , it also prevent falling of hair,
remedy for dandruff . It is also strongly recommended for use
of sleeplessness and mental anxieties .



Dosage

Slowly rub into the root of
hair twice daily or as directed
by the physician

Packing:-

115ml . 450ml .

40



Kafkur

Cough Syrup

**AN EXCELLENT & EFFECTIVE
REMEDY FOR WHOOPING COUGH**

Composition :- Justicia Adhotoda, Ocimum sanc, Ipecac,
Nux vom, Bryonia, Mephites, Drosera,
Zingiber, Stramonium, Belladonna, Syrup
& Aromatics, Alcohol

Indications :- It is sure remedy for all sorts of cough &
cold , acute and chronic , common cold bronchitis Spasmodic
cough Allergic cough . It is also applicable for whooping
cough , dry cough coming out after first sleep at midnight ,
pain in chest . etc .



Dosage

Adult : 2 teaspoonfull
Child : ½ teaspoonful 4
times a day , or as directed
by the physician

Packing:-

60ml,115ml . 450ml

41



KALMEGH

DROP

**AN EFFECTIVE MEDICIENS FOR
LIVER ,STOMACH TROUBLES**

Composition :- Kalmegh, Carica Papaya ,
Gentiana Chirata , Syrup, Aromatics , & Alcohol

Indications :- A Super tonic for. Liver complains ,
dyspepsia , Amoebic , dysentery , Indigestions ,acidity,
Constipation , Billousness , specially effective for jaundice .



Dosage

Children : 5 drops
Adults : 10 drops twice daily
With ½ cup water or as
directed by the physician,

Packing:-

15ml.

42



KALMEGH

**FOR
LIVER ,STOMACH TROUBLES**

Composition :- Andrographis P, Carica Papaya ,
Gentiana Chirata , Syrup, Aromatics , & Alcohol .

Indications :- A effective tonic for Liver & Stomach
troubles .Liver complains , dyspepsia , Amoebic , dysentery ,
Indigestions ,acidity, Constipation , Worms Billousness ,
Grinding Teeth , during Sleep specially in children and
effective for jaundice .

Dosage

Adult : Two teaspoonful
twice daily With ½ cup
water after meals.
Children : One teaspoonful
twice daily With ½ cup water
after meals or as directed
by the physician,

Packing:-

115ml, 450ml,

43





LIVERPLEX

DROP

*REMEDY FOR
LIVER TROUBLES*

Composition :- Hygrophylla , Kalmegh, Arjuna , Nux Vom, Salix Nig , Cichrium Int , Lufa Bindal , Hydrocotyle As , Nat Phos , Aqua Dist , Water , & Alcohol .

Indications :- A Powerful tonic for. Liver complains Which is used for all complaints of liver and spleen , Sluggis Liver , Loss of Appetite , indigation , Flow Of biles and keeps the bowel regular .



Dosage

Children : 10 drops
Adults : 25 drops thrice daily
With water or as directed by the physician,

Packing:-
15ml.

44



LIVERPLEX

SYRUP

*REMEDY FOR
LIVER TROUBLES*

Composition :- Kalmegh, Arjuna , Nux Vom , Salix Nig , Hygrophylla , Cichrium Int , Lufa Bindal , Hydrocotyle As , Nat Phos , Aqua Dist , Water , Syrup & Alcohol .

Indications :- It is a Powerful Liver tonic for. Which is used for all complaints of liver , enlargement of liver and spleen , Sluggis Liver , Loss of Appetite , indigation , Flow of biles and keeps the bowel regular and also prevent Falling of hair .

Dosage

Two teaspoonful Twice daily. or as directed by the physician

Packing:-

115ml. 450ML

45



MENSOPLEX

*REMEDY FOR
MENSTRUAL DISORDER*

Composition :- Pulsatilla , Asoka , Pinus L, Abroma Aug , Berbaris Vul, Secale Cor , Alestris F , Gossypium , Syrup , & Alcohol

Indications :- For Female Sex as stimulant for reproductive cycle .

WARNING : Not to used during pregnancy . it may cause Abortion / Termination.



Dosage

30 drops thrice daily With water or as directed by the physician,

Packing:-

15ml.

46



Nasaplex

NASAL DROP

*Effective relief from
Nasal Decoggestant*

Composition :- Hydrastis can , sangunaria can , kali bichrom , eucalyptus g , graphities 6, lemna minor, teucurium M.V, Alcohol.

Indications :- For a local treatment to relieve the suffering arising out of humid , dry or greasy catarrhial conditions indicate in nasal and sinus congestion due to various etiology.

Dosage

For adult & children over 6 years :1to 2 drops into each nostril per application , A total of 3-4 application per day or use as prescribe by the physician .

Packing:-

15ml.

47





PAIN RELIEF OIL

*An Excellent all purpose
MUSCLE RELAXANT*

Composition :- Symphytom off, Arnica M , Belladonna ,
Gaultheria Oil , Eucalyptus Oil, Turpentine
Oil, Mustard oil ,

Indications :- Acute & Chronic muscular ache , gout
rheumatism osteoarthritis ,Lumbago sciatica , sodalities ,
injury , bruises , strains , stiff neck and stiff neck joints ,
headache , Toothache , Poliomyelitis , Paralysis



Dosage

Massage gently on the
affected areas use as
many or as directed by
the physician

Packing:-
30ml.100ml.

48



PHYTOPLEX TABLETS

Fat Reducer

Composition :- Phytolacca berry , Fucus Ves ,
Sugar Of Milk

Indications :- It acts on reduce body fat and effective
for controlling obesity and also maintenance
of weight with out weak ness .

Dosage

3 tablets 2-3 times a day or
as directed by the physician

Packing:-
20gms.



49



Rheumplex

T A B L E T S

*For
OSTEOARTHRITIS*

Composition :- Bryonia alb 1x, Guaiacum 1x ,
Macrotin 1x, Sugar Of Milk . Q.S.

Indications :- It acts on both rheumatoid osteoarthritis
to reduce pain in the joints . it also helps to
reduce any types of pain in bones &
muscles following injury .



Dosage

2 tablets 2-3 times a day
before meals or as directed
by the physician

Packing:-
30gms.

50



Stomach Kur

*REMEDY FOR
STOMACH TROUBLES*

Composition :- Acidum Citricum , Bismuth Oxidum ,
Carica p , Nux Vom , , Aqua Dist Water ,
Syrup & Alcohol .

Indications :- This is often used in poor Appetite ,
indigestion , epigastria Comfort , bad test in Mouth ,
Constipation , Fermentation of food , leads to flatulence ,
acidity and heart burn , morning nausea with vomiting of mucus .

Dosage

Two teaspoonful Three
times a day, or as directed
by the physician

Packing:-
115ml. 450ML



51



Tonsiplex

TABLETS
For
TONSILLITIS

Composition :- Atropin surf, heper Sulf, Kali bichrom, Silicea, Merc B Iod, Sugar Of Milk ..

Indications :- Acute and Chronic tonsillitis

Dosage Children: 1 to 6 years :1 tab 3 times a day ,
6 years to 12 years : 2 tab twice a day .



Adult : Two tab Three times a day, or as directed by the physician

Packing:-
20gms.

52

Toothachekur

DROP

Composition :- Cinamonium, Chamomilla, Mentha P, Plantago Maj, Iodium, Distill water, Staphysagria, & Alcohol

Indications :- To get quick relief from violent tooth ache and also useful in painful gum and all shorts of teething troubles .

Dosage
Apply for affected spot with some cotton 3-4 times daily, gargle 3-4 times daily with 20-40 drops in a cup of water .

Packing:-
15ml

53



Vitoplex

HEALTH RESTORATIVE TONIC

Composition :- Alfalfa, Avena sat, Aswagandha, China, Hydrastis Can, Acid phos, Passiflora, Damiana, Crategus Ox, Calc Phos, Mag phos, Ferrum Phos, Nat. Phos, Kali Phos, Alcohol, Syrup & Aromatics .

Indications :- A palatable restorative tonic for general weakness, An ideal tonic for anaemia, Sleeplessness, fatigue, Poor Nutrition, Poor Appetite, Indigestion, Loss Of weight and memory, sexual debility mental and physical exhaustion /convalescence and depleted condition after child birth and after prolonged illness, etc.



Dosage
Adult : 2 teaspoonful and
Children: 1 teaspoonful with water twice daily before meals, or as directed by the physician .

Packing:-
200 ml,

54

WORMCIN

FOR ALL KINDS OF WORMS

Composition :- Cina, Santonine, Merc Dul, Granatum, Chenopodium, Thymol, Syrup, Aromatics & Alcohol

Indications :- It is used for all kinds of worms troubles, pain indication around the naval area Epigastric pain with vomiting and diarrhoea, itching of aurns or nose constant hunger, indigestion, dark rings around the epes, itching of rectum, loss of appetite, thin body but enlarge belly, constription, and irritable tensmus, grinding of teeth at night during the sleep .

Dosage
Children : 2to 5 drops
Adults : 5to 10 drops at bed time in empty stomach With water or as directed by the physician,

Packing:-
15ml..

55





Aesculus OINTMENT

Composition :- Aesculus hippo 1x in base of Paraffin Wax. and Lanolin.

Indications :- An ointment for protruding, purple, & non bleeding sacrum associated with pains in sacrum small of back, blind piles, Fissures, and cracks of the anus.

Dosage:- To be applied by rubbing gently of effected part only or as directed by the physician.



Packing:- 15gms

Arnica Mont OINTMENT

Composition :- Arnica Mont 1x in base of Paraffin Wax. and Lanolin.

Indications :- Useful in bruise, sores, contusions, blisters, of the form chafing of shoes, black and eyes, bed sores, boils which do not mature, well corns, corns for cutting muscular Rheumatism from and dampness.

Dosage:-

To be applied by rubbing gently of effected part only or as directed by the physician



Packing:- 15gms

56



Calendula OINTMENT

Composition :- Calendula 1x in base of Paraffin Wax. and Lanolin.

Indications :- It is Useful for torn and jagged wound, old sores and ulcers to promote healing and prevent suppuration, for burns, scalds, chapped and roughened hand.

Dosage :- To be applied by rubbing gently of effected part only or as directed by the physician.



Packing:- 15gms

Cantharis OINTMENT

Composition :- Cantharis 1x in base of Paraffin Wax. And Lanolin.

Indications :- It is very effective for burns when the skin is unbroken, blisters of all kinds to promote absorption. It is also used as a dressing for indolent ulcers, fistula, lepra, psoriasis, carbuncles & lupus.

Dosage :-

To be applied by rubbing gently of effected part only or as directed by the physician.



Packing:- 15gms

57



Eczimkur OINTMENT

Composition :- Resorcinum, Graphites, Petroleum, Mezerium, oil chalmugra in base of Paraffin Wax. and Lanolin

Indications :- It is an excellent ointment for specially in case of Eczema, dry or wet, purities eruption of the skin.

Dosage:- To be applied by rubbing gently of effected part only or as directed by the physician.



Packing:- 15gms

Graphites OINTMENT

Composition :- Graphites 1x in base of Paraffin Wax. and Lanolin

Indications :- All sorts of skin diseases, old ulcers, ring worms, eczema, eruptions, on the back of ears, herpes zoster, chronic eczema, hard cracked hands, fragile finger nails be relieved very soon.

Dosage:-

To be applied by rubbing gently of effected part only or as directed by the physician.



Packing:- 15gms

58



Hamamelis OINTMENT

Composition :- Hamamelis virg 1x in base of Paraffin Wax. and Lanolin.

Indications :- Very effective in bleeding piles, Fissures, ulceration, itching and bleeding from rectum, also useful in cuts, scratches, sore lips etc.

Dosage

To be applied by rubbing gently of effected part only or as directed by the physician.



Packing:- 15gms

Rhus Tox OINTMENT

Composition :- Rhus Tox 1x in base of Paraffin Wax. And Lanolin.

Indications :- Skin red and swollen, intense itching, vesicles, herpes, Urticaria, Pemphigus, Erysipelas, Rheumatic pain etc.

Dosage

To be applied on effected part only or as directed by the physician.



Packing:- 15gms

59



SALIPLEX

Skin Ointment

Composition :- Acid Salyc , calendula Off , Acid chryso, Paraffin Wax. and Lanolin.

Indications :- It is highly efficacious in ring worms , scabies & other skin diseases .



Dosage :-

To be applied on effected part only or as directed by the physician.

Packing:- 15gms

Sulphur

OINTMENT

Composition :- Sulphur 1x in base of Paraffin Wax. and Lanolin.

Indications :- Acts for itches , dry scaly , unhealthy skin ,every injury, suppurates , stiffness of knees and ankles etc .



Dosage :-

To be applied on effected part only or as directed by the physician

Packing:- 15gms

60



Thuja

OINTMENT



Composition :- Thuja occi 1x in base of Paraffin Wax. and Lanolin

Indications :- It is tronly recommended in repressing. fungus granulations of ulcers for removing warts and fungus like growths in all califlower Exersconcea as a dressing for

Dosage

To be applied on effected part only or as directed by the physician

Packing:- 15gms



BIO CHEMIC & BIO COMBINATION MEDICINES



A range of 12 Bio-Chemic & 1 - 28 Bio-Combination are available with us

61



DILUTION

- Back Potency of B&T is used.
- Potentization is done according to Hahnemannian



method under the responsibility of qualified experts.

- Strictly follow the H. P. I. norms.
 - Standardization & purity check are by sophisticated procedures.
- Manufactured in the most modern, well equipped factory & follow G. M. P. standards.

Packing:- 15ml, 30ml, 100ml, 450ml.

More than 700 varieties of Dilutions.

HOMOEOPATHIC TINCTURE

- Mother Tinctures are filtered through very fine filters to remove the minutest impurities that occur during the handing of Herbs.



- Moisture in the Herb is determined by Electronic infrared Moisture Analyzer as per H. P. I. standard to get right balance between moisture & Menstrum.
- Natural Colour of Mother Tinctures are preserved by highly standardized method.
- Prepared from Original Crude Drugs.

Packing:- 15ml, 30ml, 100ml, 450ml.

More than 350 varieties of Mother Tinctures.

62

OUR BIOCHEMIC COMBINATION NAME IS "BIPLEX" WHICH CONTAINS 30GRMS BY WEIGHT OF BIOCHEMIC TABLETS



BIPLEX NO	1	ANAEMIA
BIPLEX NO	2	ASTHAMA
BIPLEX NO	3	COLIC
BIPLEX NO	4	CONSTRICTION
BIPLEX NO	5	CORYZA
BIPLEX NO	6	COUGH & COLD
BIPLEX NO	7	DIABATIS
BIPLEX NO	8	DIARRHOEA
BIPLEX NO	9	DYSENTERY
BIPLEX NO	10	ENLARGED TONSIL
BIPLEX NO	11	FEVER
BIPLEX NO	12	HEADACHE
BIPLEX NO	13	LEUCORRHOEA
BIPLEX NO	14	MEASLES
BIPLEX NO	15	MENSTRUATION
BIPLEX NO	16	NERVOUSNESS
BIPLEX NO	17	PILES
BIPLEX NO	18	PYRRHOEA
BIPLEX NO	19	RHEUMATISM
BIPLEX NO	20	SKIN DISEASES
BIPLEX NO	21	TEETHING TROUBLES
BIPLEX NO	22	SCROFULA
BIPLEX NO	23	TOOTHACHE
BIPLEX NO	24	TONIC
BIPLEX NO	25	INDIGESTION
BIPLEX NO	26	EASY BIRTH
BIPLEX NO	27	VITALITY
BIPLEX NO	28	GENERAL TONIC

63